



MCKINNEY AT A GLANCE

Prepared by the McKinney Planning Department

We are on the web!
 www.mckinneytexas.org

POPULATION SUMMARY

| McKinney Population (1900 - 2011) | | | | | |
|-----------------------------------|------------|------|------------|------|------------|
| Year | Population | Year | Population | Year | Population |
| 1900 | 4,342 | 2000 | 54,369* | 2010 | 126,548** |
| 1910 | 4,714 | 2001 | 58,438** | 2011 | 130,492** |
| 1920 | 6,677 | 2002 | 66,990** | 2012 | |
| 1930 | 7,307 | 2003 | 76,907** | 2013 | |
| 1940 | 8,555 | 2004 | 85,865** | 2014 | |
| 1950 | 10,560 | 2005 | 94,733** | 2015 | |
| 1960 | 13,763 | 2006 | 104,853** | 2016 | |
| 1970 | 15,193 | 2007 | 115,198** | 2017 | |
| 1980 | 16,256 | 2008 | 120,978** | 2018 | |
| 1990 | 21,283 | 2009 | 122,083** | 2019 | |

*Official Census 2000 figure

** Estimate as of January of that calendar year

SUMMARY OF DEVELOPMENT

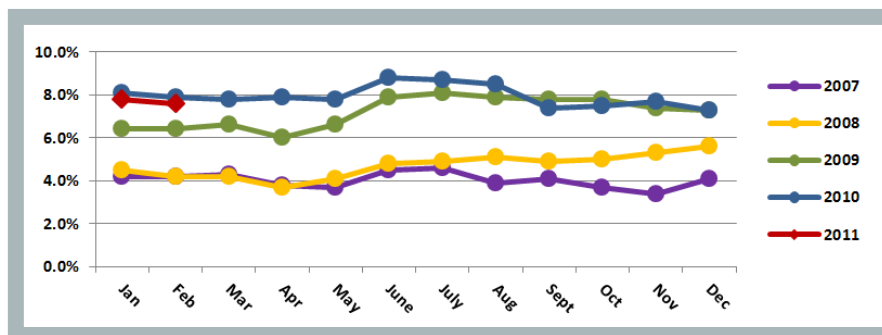
| Development Type | Permits Issued | Construction Dollars |
|--------------------|----------------|----------------------|
| Single Family | 111 | \$35,439,560 |
| Multi Family Units | 0@0 | \$0 |
| Non-Residential | 3 | \$1,050,000 |
| Vertical Mixed Use | 0@0 | \$0 |

Note: Non-residential permits include commercial, institutional and recreational permits

NON-RESIDENTIAL AND VERTICAL MIXED USE DEVELOPMENT (SQ. FT.)

| Project | Type | Area | Valuation |
|--------------------------|---------------|-------|-----------|
| Del Taco | Restaurant | 2,268 | \$400,000 |
| Central Church of Christ | Institutional | 3,146 | \$250,000 |
| Sonic Drive-In | Restaurant | 8,934 | \$400,000 |

MCKINNEY UNEMPLOYMENT DATA



CITY OF MCKINNEY PLANNING DEPARTMENT
 221 N. Tennessee Street
 McKinney, Texas 75069
 Phone: 972.547.7475
 Fax: 972.547.2604
 Hours: 8:00 a.m. to 5:00 p.m.
 Monday through Friday



UNEMPLOYMENT RATES
 Unemployment Rate published by the Texas Workforce Commission for February 2011
 McKinney: 7.6%
 Collin County: 7.3%
 Texas: 8.2%
 United States: 8.9%

Note: United States and Texas unemployment rates are seasonally adjusted

NON-RESIDENTIAL PERMITS (2007-2011)

| | 2007 | | 2008 | | 2009 | | 2010 | | 2011 | |
|--------------|---------|---------------|---------|---------------|---------|---------------|---------|---------------|---------|-------------|
| | Permits | Valuation | Permits | Valuation | Permits | Valuation | Permits | Valuation | Permits | Valuation |
| Q1 | 8 | \$32,650,000 | 16 | \$46,056,816 | 15 | \$71,507,275 | 5 | \$8,700,000 | 9 | \$5,805,000 |
| Q2 | 20 | \$28,815,945 | 13 | \$10,377,250 | 11 | \$5,086,303 | 11 | \$92,565,200 | | |
| Q3 | 24 | \$50,699,275 | 10 | \$88,506,315 | 13 | \$31,600,711 | 4 | \$2,544,000 | | |
| Q4 | 12 | \$48,815,000 | 15 | \$67,267,383 | 4 | \$10,200,000 | 6 | \$5,316,520 | | |
| Total | 64 | \$160,980,220 | 54 | \$212,207,764 | 43 | \$118,394,289 | 26 | \$109,125,720 | 9 | \$5,805,000 |

 Year to Date

VERTICAL MIXED USE PERMITS (2007-2011)

| | 2007 | | 2008 | | 2009 | | 2010 | | 2011 | |
|--------------|---------|--------------|---------|-----------|---------|-----------|---------|-----------|---------|-----------|
| | Permits | Valuation | Permits | Valuation | Permits | Valuation | Permits | Valuation | Permits | Valuation |
| Q1 | 2@320 | \$37,406,175 | 0@0 | \$0 | 0@0 | \$0 | 0@0 | \$0 | 0@0 | \$0 |
| Q2 | 1@0 | \$5,000,000 | 0@0 | \$0 | 0@0 | \$0 | 0@0 | \$0 | | |
| Q3 | 0@0 | \$0 | 0@0 | \$0 | 0@0 | \$0 | 0@0 | \$0 | | |
| Q4 | 0@0 | \$0 | 0@0 | \$0 | 0@0 | \$0 | 0@0 | \$0 | | |
| Total | 3@320 | \$42,406,175 | 0@0 | \$0 | 0@0 | \$0 | 0@0 | \$0 | 0@0 | \$0 |

 Year to Date


MULTI-FAMILY UNIT PERMITS (2007-2011)

| | 2007 | | 2008 | | 2009 | | 2010 | | 2011 | |
|--------------|---------|--------------|---------|--------------|---------|--------------|---------|-----------|---------|-----------|
| | Permits | Valuation | Permits | Valuation | Permits | Valuation | Permits | Valuation | Permits | Valuation |
| Q1 | 1@20 | \$2,000,000 | 0@0 | \$0 | 3@1,008 | \$60,385,900 | 0@0 | \$0 | 0@0 | \$0 |
| Q2 | 1@187 | \$4,115,880 | 2@812 | \$48,860,000 | 0@0 | \$0 | 0@0 | \$0 | | |
| Q3 | 0@0 | \$0 | 0@0 | \$0 | 0@0 | \$0 | 0@0 | \$0 | | |
| Q4 | 1@379 | \$20,000,000 | 0@0 | \$0 | 0@0 | \$0 | 0@0 | \$0 | | |
| Total | 3@586 | \$26,115,880 | 2@812 | \$48,860,000 | 3@1,008 | \$60,385,900 | 0@0 | \$0 | 0@0 | \$0 |

 Year to Date

SINGLE FAMILY PERMITS (2007-2011)

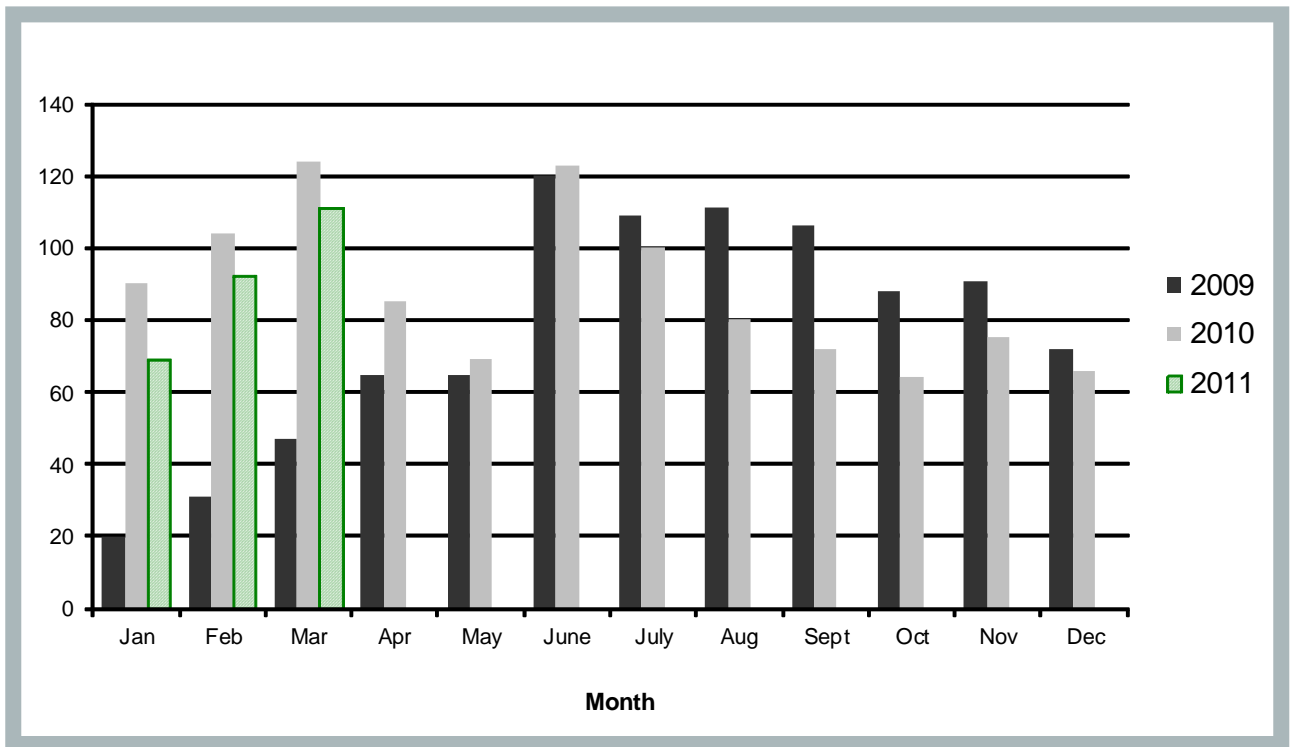
| | 2007 | | 2008 | | 2009 | | 2010 | | 2011 | |
|--------------|---------|---------------|---------|---------------|---------|---------------|---------|---------------|---------|--------------|
| | Permits | Valuation | Permits | Valuation | Permits | Valuation | Permits | Valuation | Permits | Valuation |
| Q1 | 453 | \$70,458,010 | 310 | \$48,298,940 | 98 | \$30,742,752 | 318 | \$95,363,468 | 272 | \$90,446,767 |
| Q2 | 584 | \$89,346,375 | 345 | \$52,733,340 | 250 | \$74,293,319 | 277 | \$88,101,864 | | |
| Q3 | 392 | \$60,713,360 | 213 | \$32,173,605 | 326 | \$95,794,828 | 252 | \$81,301,344 | | |
| Q4 | 222 | \$35,132,655 | 118 | \$34,234,233 | 253 | \$76,579,581 | 205 | \$63,844,791 | | |
| Total | 1,651 | \$255,650,600 | 986 | \$167,440,118 | 927 | \$277,410,480 | 1,052 | \$328,611,467 | 272 | \$90,446,767 |

 Year to Date

Note: Permit activity listed by calendar year.

All permits listed are for new building permits alone and do not include additions and alteration permits.

SINGLE FAMILY PERMITS (2009-2011)



NON-RESIDENTIAL VALUATION (2009-2011)

