



MCKINNEY AT A GLANCE

Prepared by the McKinney Planning Department

We are on the web!
 www.mckinneytexas.org

POPULATION SUMMARY

McKinney Population (1900 - 2011)					
Year	Population	Year	Population	Year	Population
1900	4,342	2000	54,369	2010	126,548**
1910	4,714	2001	58,438**	2011	130,492**
1920	6,677	2002	66,990**	2012	
1930	7,307	2003	76,907**	2013	
1940	8,555	2004	85,865**	2014	
1950	10,560	2005	94,733**	2015	
1960	13,763	2006	104,853**	2016	
1970	15,193	2007	115,198**	2017	
1980	16,256	2008	120,978**	2018	
1990	21,283	2009	122,083**	2019	

Official Census 2000 figure unless otherwise noted. ** Estimate as of January of that calendar year
 Note: The City of McKinney utilizes the latest decennial Census housing data as a baseline for calculating annual population estimates. Following release of the 2010 Census housing data (anticipated in Summer 2011), City Staff will update the 2010 and 2011 population estimates in the McKinney at a Glance publication.

SUMMARY OF DEVELOPMENT

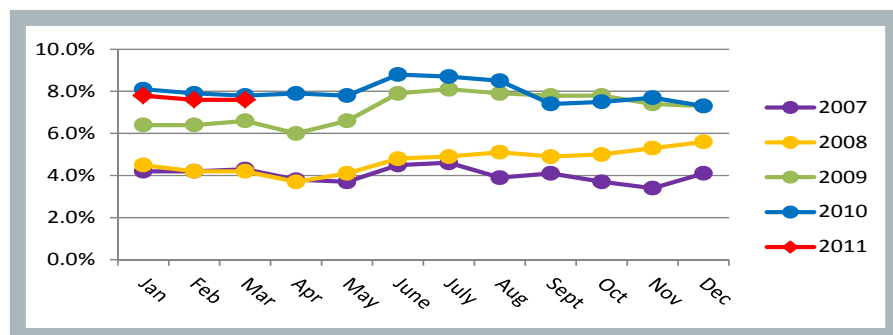
Development Type	Permits Issued	Construction Dollars
Single Family	103	\$35,684,336
Multi Family Units	0@0	\$0
Non-Residential	2	\$1,207,000
Vertical Mixed Use	0@0	\$0

Note: Non-residential permits include commercial, institutional and recreational permits

NON-RESIDENTIAL AND VERTICAL MIXED USE DEVELOPMENT (SQ. FT.)

Project	Type	Area	Valuation
Stonebridge Cleaners	Retail / Services	3,862	\$300,000
Texoma Arthritis Clinic	Medical	5,641	\$907,000

MCKINNEY UNEMPLOYMENT DATA



**CITY OF MCKINNEY
 PLANNING DEPARTMENT**
 221 N. Tennessee Street
 McKinney, Texas 75069
 Phone: 972.547.7475
 Fax: 972.547.2604
 Hours: 8:00 a.m. to 5:00 p.m.
 Monday through Friday



UNEMPLOYMENT RATES
 Unemployment Rate published by the Texas Workforce Commission for March 2011
 McKinney: 7.6%
 Collin County: 7.4%
 Texas: 8.1%
 United States: 8.8%

Note: United States and Texas unemployment rates are seasonally adjusted

NON-RESIDENTIAL PERMITS (2007-2011)

	2007		2008		2009		2010		2011	
	Permits	Valuation	Permits	Valuation	Permits	Valuation	Permits	Valuation	Permits	Valuation
Q1	8	\$32,650,000	16	\$46,056,816	15	\$71,507,275	5	\$8,700,000	9	\$5,805,000
Q2	20	\$28,815,945	13	\$10,377,250	11	\$5,086,303	11	\$92,565,200	2	\$1,207,000
Q3	24	\$50,699,275	10	\$88,506,315	13	\$31,600,711	4	\$2,544,000		
Q4	12	\$48,815,000	15	\$67,267,383	4	\$10,200,000	6	\$5,316,520		
Total	64	\$160,980,220	54	\$212,207,764	43	\$118,394,289	26	\$109,125,720	11	\$7,012,000

Quarter to Date Year to Date

VERTICAL MIXED USE PERMITS (2007-2011)

	2007		2008		2009		2010		2011	
	Permits	Valuation	Permits	Valuation	Permits	Valuation	Permits	Valuation	Permits	Valuation
Q1	2@320	\$37,406,175	0@0	\$0	0@0	\$0	0@0	\$0	0@0	\$0
Q2	1@0	\$5,000,000	0@0	\$0	0@0	\$0	0@0	\$0	0@0	\$0
Q3	0@0	\$0	0@0	\$0	0@0	\$0	0@0	\$0		
Q4	0@0	\$0	0@0	\$0	0@0	\$0	0@0	\$0		
Total	3@320	\$42,406,175	0@0	\$0	0@0	\$0	0@0	\$0	0@0	\$0

Quarter to Date Year to Date

MULTI-FAMILY UNIT PERMITS (2007-2011)

	2007		2008		2009		2010		2011	
	Permits	Valuation	Permits	Valuation	Permits	Valuation	Permits	Valuation	Permits	Valuation
Q1	1@20	\$2,000,000	0@0	\$0	3@1,008	\$60,385,900	0@0	\$0	0@0	\$0
Q2	1@187	\$4,115,880	2@812	\$48,860,000	0@0	\$0	0@0	\$0	0@0	\$0
Q3	0@0	\$0	0@0	\$0	0@0	\$0	0@0	\$0		
Q4	1@379	\$20,000,000	0@0	\$0	0@0	\$0	0@0	\$0		
Total	3@586	\$26,115,880	2@812	\$48,860,000	3@1,008	\$60,385,900	0@0	\$0	0@0	\$0

Quarter to Date Year to Date

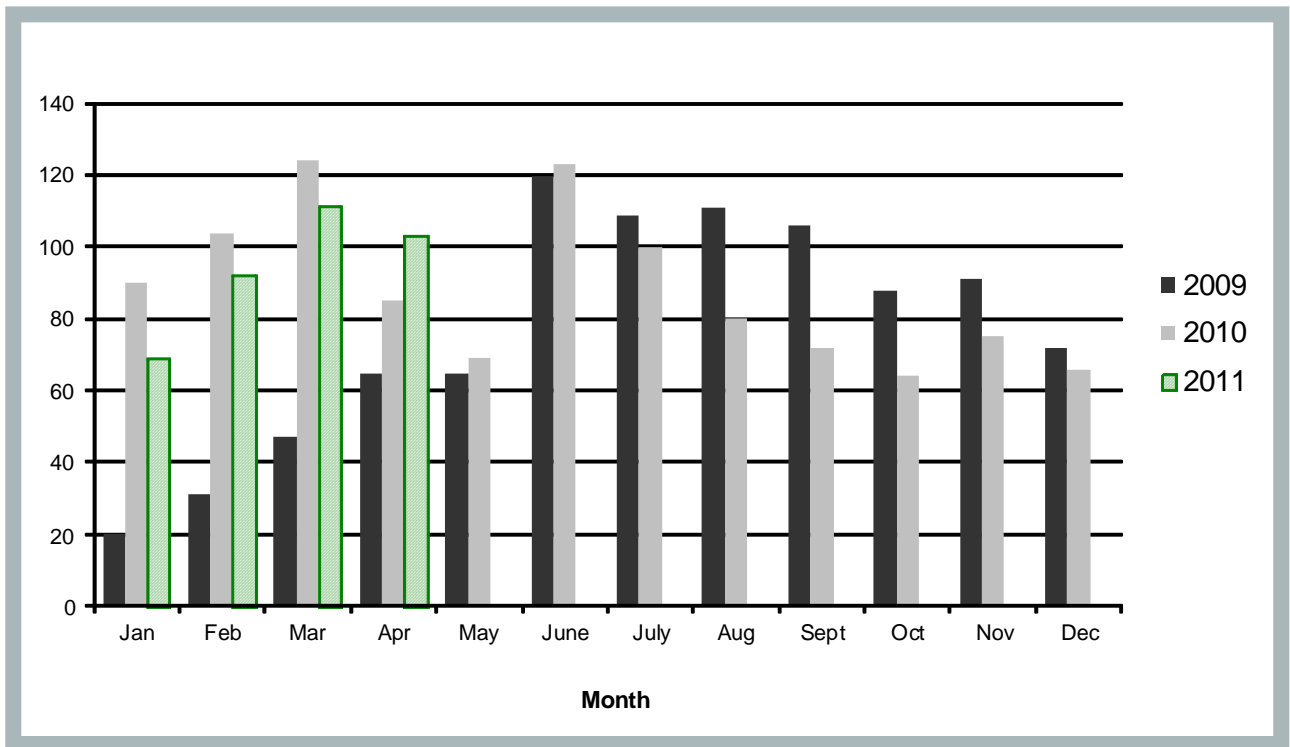
SINGLE FAMILY PERMITS (2007-2011)

	2007		2008		2009		2010		2011	
	Permits	Valuation	Permits	Valuation	Permits	Valuation	Permits	Valuation	Permits	Valuation
Q1	453	\$70,458,010	310	\$48,298,940	98	\$30,742,752	318	\$95,363,468	272	\$90,446,767
Q2	584	\$89,346,375	345	\$52,733,340	250	\$74,293,319	277	\$88,101,864	103	\$35,684,336
Q3	392	\$60,713,360	213	\$32,173,605	326	\$95,794,828	252	\$81,301,344		
Q4	222	\$35,132,655	118	\$34,234,233	253	\$76,579,581	205	\$63,844,791		
Total	1,651	\$255,650,600	986	\$167,440,118	927	\$277,410,480	1,052	\$328,611,467	375	\$126,131,103

Quarter to Date Year to Date

Note: Permit activity listed by calendar year.
All permits listed are for new building permits alone and do not include additions and alteration permits.

SINGLE FAMILY PERMITS (2009-2011)



NON-RESIDENTIAL VALUATION (2009-2011)

