



# MCKINNEY AT A GLANCE

Prepared by the McKinney Planning Department

We are on the web!  
 www.mckinneytexas.org

## POPULATION SUMMARY

McKinney Population (1900 - 2011)					
Year	Population	Year	Population	Year	Population
1900	4,342	2000	54,369	2010	126,548**
1910	4,714	2001	58,438**	2011	130,492**
1920	6,677	2002	66,990**	2012	
1930	7,307	2003	76,907**	2013	
1940	8,555	2004	85,865**	2014	
1950	10,560	2005	94,733**	2015	
1960	13,763	2006	104,853**	2016	
1970	15,193	2007	115,198**	2017	
1980	16,256	2008	120,978**	2018	
1990	21,283	2009	122,083**	2019	

Official Census 2000 figure unless otherwise noted. \*\* Estimate as of January of that calendar year  
 Note: The City of McKinney utilizes the latest decennial Census housing data as a baseline for calculating annual population estimates. Following release of the 2010 Census housing data (anticipated in Summer 2011), City Staff will update the 2010 and 2011 population estimates in the McKinney at a Glance publication.

## SUMMARY OF DEVELOPMENT

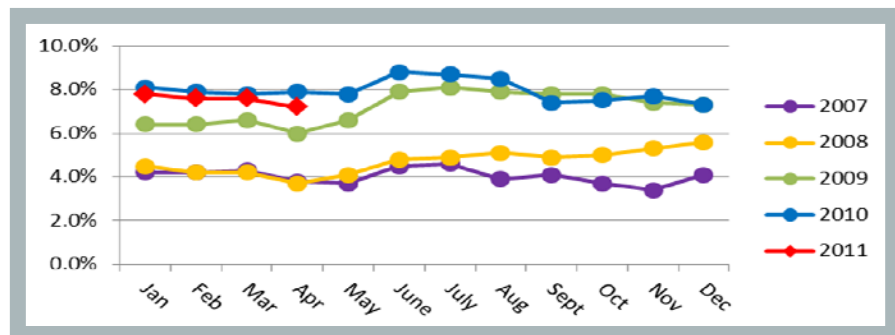
Development Type	Permits Issued	Construction Dollars
Single Family	100	\$33,330,144
Multi Family Units	0@0	\$0
Non-Residential	2	\$443,300
Vertical Mixed Use	0@0	\$0

Note: Non-residential permits include commercial, institutional and recreational permits

## NON-RESIDENTIAL AND VERTICAL MIXED USE DEVELOPMENT (SQ. FT.)

Project	Type	Area	Valuation
Chase Bank Drive-Thru	Office	120	\$43,300
AutoZone #4261	Retail / Service	7,147	\$400,000

## MCKINNEY UNEMPLOYMENT DATA



**CITY OF MCKINNEY  
 PLANNING DEPARTMENT**  
 221 N. Tennessee Street  
 McKinney, Texas 75069  
 Phone: 972.547.7475  
 Fax: 972.547.2604  
 Hours: 8:00 a.m. to 5:00 p.m.  
 Monday through Friday



**UNEMPLOYMENT RATES**  
 Unemployment Rate published by the Texas Workforce Commission for April 2011  
 McKinney: 7.2%  
 Collin County: 7.1%  
 Texas: 8.0%  
 United States: 9.0%

Note: United States and Texas unemployment rates are seasonally adjusted

**NON-RESIDENTIAL PERMITS (2007-2011)**

	2007		2008		2009		2010		2011	
	Permits	Valuation	Permits	Valuation	Permits	Valuation	Permits	Valuation	Permits	Valuation
<b>Q1</b>	8	\$32,650,000	16	\$46,056,816	15	\$71,507,275	5	\$8,700,000	9	\$5,805,000
<b>Q2</b>	20	\$28,815,945	13	\$10,377,250	11	\$5,086,303	11	\$92,565,200	4	\$1,650,300
<b>Q3</b>	24	\$50,699,275	10	\$88,506,315	13	\$31,600,711	4	\$2,544,000		
<b>Q4</b>	12	\$48,815,000	15	\$67,267,383	4	\$10,200,000	6	\$5,316,520		
<b>Total</b>	64	\$160,980,220	54	\$212,207,764	43	\$118,394,289	26	\$109,125,720	13	\$7,455,300

Quarter to Date Year to Date

**VERTICAL MIXED USE PERMITS (2007-2011)**

	2007		2008		2009		2010		2011	
	Permits	Valuation	Permits	Valuation	Permits	Valuation	Permits	Valuation	Permits	Valuation
<b>Q1</b>	2@320	\$37,406,175	0@0	\$0	0@0	\$0	0@0	\$0	0@0	\$0
<b>Q2</b>	1@0	\$5,000,000	0@0	\$0	0@0	\$0	0@0	\$0	0@0	\$0
<b>Q3</b>	0@0	\$0	0@0	\$0	0@0	\$0	0@0	\$0		
<b>Q4</b>	0@0	\$0	0@0	\$0	0@0	\$0	0@0	\$0		
<b>Total</b>	3@320	\$42,406,175	0@0	\$0	0@0	\$0	0@0	\$0	0@0	\$0

Quarter to Date Year to Date

**MULTI-FAMILY UNIT PERMITS (2007-2011)**

	2007		2008		2009		2010		2011	
	Permits	Valuation	Permits	Valuation	Permits	Valuation	Permits	Valuation	Permits	Valuation
<b>Q1</b>	1@20	\$2,000,000	0@0	\$0	3@1,008	\$60,385,900	0@0	\$0	0@0	\$0
<b>Q2</b>	1@187	\$4,115,880	2@812	\$48,860,000	0@0	\$0	0@0	\$0	0@0	\$0
<b>Q3</b>	0@0	\$0	0@0	\$0	0@0	\$0	0@0	\$0		
<b>Q4</b>	1@379	\$20,000,000	0@0	\$0	0@0	\$0	0@0	\$0		
<b>Total</b>	3@586	\$26,115,880	2@812	\$48,860,000	3@1,008	\$60,385,900	0@0	\$0	0@0	\$0

Quarter to Date Year to Date

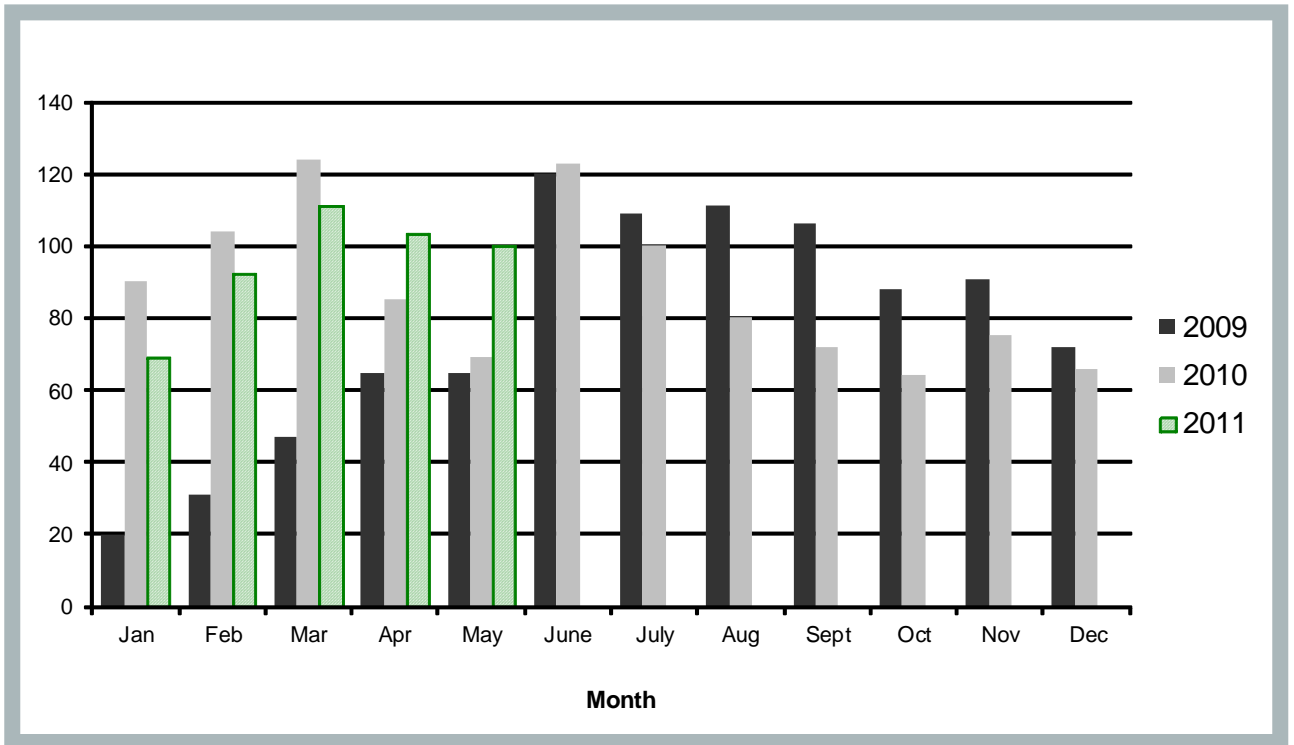
**SINGLE FAMILY PERMITS (2007-2011)**

	2007		2008		2009		2010		2011	
	Permits	Valuation	Permits	Valuation	Permits	Valuation	Permits	Valuation	Permits	Valuation
<b>Q1</b>	453	\$70,458,010	310	\$48,298,940	98	\$30,742,752	318	\$95,363,468	272	\$90,446,767
<b>Q2</b>	584	\$89,346,375	345	\$52,733,340	250	\$74,293,319	277	\$88,101,864	203	\$69,014,480
<b>Q3</b>	392	\$60,713,360	213	\$32,173,605	326	\$95,794,828	252	\$81,301,344		
<b>Q4</b>	222	\$35,132,655	118	\$34,234,233	253	\$76,579,581	205	\$63,844,791		
<b>Total</b>	1,651	\$255,650,600	986	\$167,440,118	927	\$277,410,480	1,052	\$328,611,467	475	\$159,461,247

Quarter to Date Year to Date

Note: Permit activity listed by calendar year.  
All permits listed are for new building permits alone and do not include additions and alteration permits.

### SINGLE FAMILY PERMITS (2009-2011)



### NON-RESIDENTIAL VALUATION (2009-2011)

