



# MCKINNEY AT A GLANCE

Prepared by the McKinney Planning Department

We are on the web!  
 www.mckinneytexas.org

## POPULATION SUMMARY

| McKinney Population (1900 - 2011) |            |      |            |      |            |
|-----------------------------------|------------|------|------------|------|------------|
| Year                              | Population | Year | Population | Year | Population |
| 1900                              | 4,342      | 2000 | 54,369     | 2010 | 126,548**  |
| 1910                              | 4,714      | 2001 | 58,438**   | 2011 | 130,492**  |
| 1920                              | 6,677      | 2002 | 66,990**   | 2012 |            |
| 1930                              | 7,307      | 2003 | 76,907**   | 2013 |            |
| 1940                              | 8,555      | 2004 | 85,865**   | 2014 |            |
| 1950                              | 10,560     | 2005 | 94,733**   | 2015 |            |
| 1960                              | 13,763     | 2006 | 104,853**  | 2016 |            |
| 1970                              | 15,193     | 2007 | 115,198**  | 2017 |            |
| 1980                              | 16,256     | 2008 | 120,978**  | 2018 |            |
| 1990                              | 21,283     | 2009 | 122,083**  | 2019 |            |

Official Census 2000 figure unless otherwise noted. \*\* Estimate as of January of that calendar year  
 Note: The City of McKinney utilizes the latest decennial Census housing data as a baseline for calculating annual population estimates. Following release of the 2010 Census housing data (anticipated in Summer 2011), City Staff will update the 2010 and 2011 population estimates in the McKinney at a Glance publication.

## SUMMARY OF DEVELOPMENT

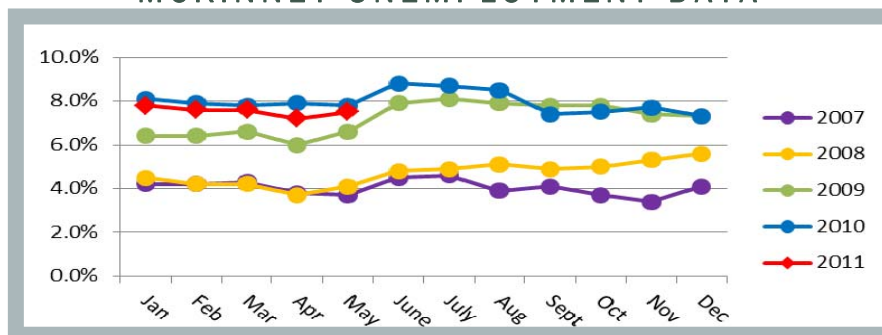
| Development Type   | Permits Issued | Construction Dollars |
|--------------------|----------------|----------------------|
| Single Family      | 102            | \$34,797,984         |
| Multi Family Units | 0@0            | \$0                  |
| Non-Residential    | 5              | \$11,600,000         |
| Vertical Mixed Use | 0@0            | \$0                  |

Note: Non-residential permits include commercial, institutional and recreational permits

## NON-RESIDENTIAL AND VERTICAL MIXED USE DEVELOPMENT (SQ. FT.)

| Project                        | Type          | Area    | Valuation   |
|--------------------------------|---------------|---------|-------------|
| Baylor Medical Office Building | Medical       | 116,847 | \$9,000,000 |
| St. Andrews Episcopal Church   | Institutional | 8,796   | \$1,600,000 |
| Whataburger                    | Restaurant    | 3,117   | \$750,000   |
| S-2 Hangar #18                 | Industrial    | 3,600   | \$125,000   |
| S-2 Hangar #20                 | Industrial    | 3,600   | \$125,000   |

## MCKINNEY UNEMPLOYMENT DATA



**CITY OF MCKINNEY PLANNING DEPARTMENT**  
 221 N. Tennessee Street  
 McKinney, Texas 75069  
 Phone: 972.547.7475  
 Fax: 972.547.2604  
 Hours: 8:00 a.m. to 5:00 p.m.  
 Monday through Friday



**UNEMPLOYMENT RATES**  
 Unemployment Rate published by the Texas Workforce Commission for May 2011  
 McKinney: 7.5%  
 Collin County: 7.3%  
 Texas: 8.0%  
 United States: 9.1%

Note: United States and Texas unemployment rates are seasonally adjusted


## NON-RESIDENTIAL PERMITS (2007-2011)

|              | 2007    |               | 2008    |               | 2009    |               | 2010    |               | 2011    |              |
|--------------|---------|---------------|---------|---------------|---------|---------------|---------|---------------|---------|--------------|
|              | Permits | Valuation     | Permits | Valuation     | Permits | Valuation     | Permits | Valuation     | Permits | Valuation    |
| <b>Q1</b>    | 8       | \$32,650,000  | 16      | \$46,056,816  | 15      | \$71,507,275  | 5       | \$8,700,000   | 9       | \$5,805,000  |
| <b>Q2</b>    | 20      | \$28,815,945  | 13      | \$10,377,250  | 11      | \$5,086,303   | 11      | \$92,565,200  | 9       | \$13,250,300 |
| <b>Q3</b>    | 24      | \$50,699,275  | 10      | \$88,506,315  | 13      | \$31,600,711  | 4       | \$2,544,000   |         |              |
| <b>Q4</b>    | 12      | \$48,815,000  | 15      | \$67,267,383  | 4       | \$10,200,000  | 6       | \$5,316,520   |         |              |
| <b>Total</b> | 64      | \$160,980,220 | 54      | \$212,207,764 | 43      | \$118,394,289 | 26      | \$109,125,720 | 18      | \$19,055,300 |

 Year to Date


## VERTICAL MIXED USE PERMITS (2007-2011)

|              | 2007    |              | 2008    |           | 2009    |           | 2010    |           | 2011    |           |
|--------------|---------|--------------|---------|-----------|---------|-----------|---------|-----------|---------|-----------|
|              | Permits | Valuation    | Permits | Valuation | Permits | Valuation | Permits | Valuation | Permits | Valuation |
| <b>Q1</b>    | 2@320   | \$37,406,175 | 0@0     | \$0       | 0@0     | \$0       | 0@0     | \$0       | 0@0     | \$0       |
| <b>Q2</b>    | 1@0     | \$5,000,000  | 0@0     | \$0       | 0@0     | \$0       | 0@0     | \$0       | 0@0     | \$0       |
| <b>Q3</b>    | 0@0     | \$0          | 0@0     | \$0       | 0@0     | \$0       | 0@0     | \$0       |         |           |
| <b>Q4</b>    | 0@0     | \$0          | 0@0     | \$0       | 0@0     | \$0       | 0@0     | \$0       |         |           |
| <b>Total</b> | 3@320   | \$42,406,175 | 0@0     | \$0       | 0@0     | \$0       | 0@0     | \$0       | 0@0     | \$0       |

 Year to Date

## MULTI-FAMILY UNIT PERMITS (2007-2011)

|              | 2007    |              | 2008    |              | 2009    |              | 2010    |           | 2011    |           |
|--------------|---------|--------------|---------|--------------|---------|--------------|---------|-----------|---------|-----------|
|              | Permits | Valuation    | Permits | Valuation    | Permits | Valuation    | Permits | Valuation | Permits | Valuation |
| <b>Q1</b>    | 1@20    | \$2,000,000  | 0@0     | \$0          | 3@1,008 | \$60,385,900 | 0@0     | \$0       | 0@0     | \$0       |
| <b>Q2</b>    | 1@187   | \$4,115,880  | 2@812   | \$48,860,000 | 0@0     | \$0          | 0@0     | \$0       | 0@0     | \$0       |
| <b>Q3</b>    | 0@0     | \$0          | 0@0     | \$0          | 0@0     | \$0          | 0@0     | \$0       |         |           |
| <b>Q4</b>    | 1@379   | \$20,000,000 | 0@0     | \$0          | 0@0     | \$0          | 0@0     | \$0       |         |           |
| <b>Total</b> | 3@586   | \$26,115,880 | 2@812   | \$48,860,000 | 3@1,008 | \$60,385,900 | 0@0     | \$0       | 0@0     | \$0       |

 Year to Date

## SINGLE FAMILY PERMITS (2007-2011)

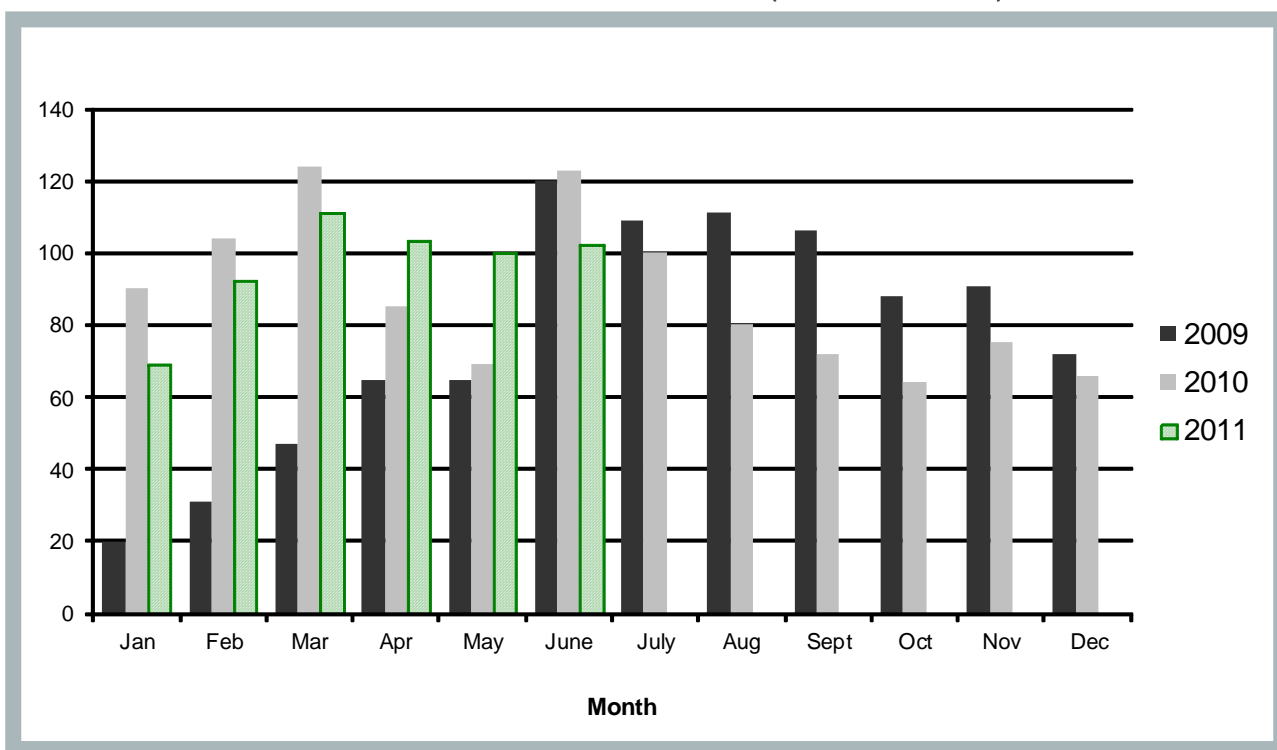
|              | 2007    |               | 2008    |               | 2009    |               | 2010    |               | 2011    |               |
|--------------|---------|---------------|---------|---------------|---------|---------------|---------|---------------|---------|---------------|
|              | Permits | Valuation     | Permits | Valuation     | Permits | Valuation     | Permits | Valuation     | Permits | Valuation     |
| <b>Q1</b>    | 453     | \$70,458,010  | 310     | \$48,298,940  | 98      | \$30,742,752  | 318     | \$95,363,468  | 272     | \$90,446,767  |
| <b>Q2</b>    | 584     | \$89,346,375  | 345     | \$52,733,340  | 250     | \$74,293,319  | 277     | \$88,101,864  | 305     | \$103,812,464 |
| <b>Q3</b>    | 392     | \$60,713,360  | 213     | \$32,173,605  | 326     | \$95,794,828  | 252     | \$81,301,344  |         |               |
| <b>Q4</b>    | 222     | \$35,132,655  | 118     | \$34,234,233  | 253     | \$76,579,581  | 205     | \$63,844,791  |         |               |
| <b>Total</b> | 1,651   | \$255,650,600 | 986     | \$167,440,118 | 927     | \$277,410,480 | 1,052   | \$328,611,467 | 577     | \$194,259,231 |

 Year to Date

Note: Permit activity listed by calendar year.

All permits listed are for new building permits alone and do not include additions and alteration permits.

### SINGLE FAMILY PERMITS (2009-2011)



### NON-RESIDENTIAL VALUATION (2009-2011)

