



## NON-RESIDENTIAL PERMITS (2007-2011)

	2007		2008		2009		2010		2011	
	Permits	Valuation	Permits	Valuation	Permits	Valuation	Permits	Valuation	Permits	Valuation
<b>Q1</b>	8	\$32,650,000	16	\$46,056,816	15	\$71,507,275	5	\$8,700,000	9	\$5,805,000
<b>Q2</b>	20	\$28,815,945	13	\$10,377,250	11	\$5,086,303	11	\$92,565,200	9	\$13,250,300
<b>Q3</b>	24	\$50,699,275	10	\$88,506,315	13	\$31,600,711	4	\$2,544,000	7	\$16,342,360
<b>Q4</b>	12	\$48,815,000	15	\$67,267,383	4	\$10,200,000	6	\$5,316,520		
<b>Total</b>	64	\$160,980,220	54	\$212,207,764	43	\$118,394,289	26	\$109,125,720	25	\$35,397,660

Quarter to Date Year to Date

## VERTICAL MIXED USE PERMITS (2007-2011)

	2007		2008		2009		2010		2011	
	Permits	Valuation	Permits	Valuation	Permits	Valuation	Permits	Valuation	Permits	Valuation
<b>Q1</b>	2@320	\$37,406,175	0@0	\$0	0@0	\$0	0@0	\$0	0@0	\$0
<b>Q2</b>	1@0	\$5,000,000	0@0	\$0	0@0	\$0	0@0	\$0	0@0	\$0
<b>Q3</b>	0@0	\$0	0@0	\$0	0@0	\$0	0@0	\$0	0@0	\$0
<b>Q4</b>	0@0	\$0	0@0	\$0	0@0	\$0	0@0	\$0		
<b>Total</b>	3@320	\$42,406,175	0@0	\$0	0@0	\$0	0@0	\$0	0@0	\$0

Quarter to Date Year to Date

## MULTI-FAMILY UNIT PERMITS (2007-2011)

	2007		2008		2009		2010		2011	
	Permits	Valuation	Permits	Valuation	Permits	Valuation	Permits	Valuation	Permits	Valuation
<b>Q1</b>	1@20	\$2,000,000	0@0	\$0	3@1,008	\$60,385,900	0@0	\$0	0@0	\$0
<b>Q2</b>	1@187	\$4,115,880	2@812	\$48,860,000	0@0	\$0	0@0	\$0	0@0	\$0
<b>Q3</b>	0@0	\$0	0@0	\$0	0@0	\$0	0@0	\$0	0@0	\$0
<b>Q4</b>	1@379	\$20,000,000	0@0	\$0	0@0	\$0	0@0	\$0		
<b>Total</b>	3@586	\$26,115,880	2@812	\$48,860,000	3@1,008	\$60,385,900	0@0	\$0	0@0	\$0

Quarter to Date Year to Date

## SINGLE FAMILY PERMITS (2007-2011)

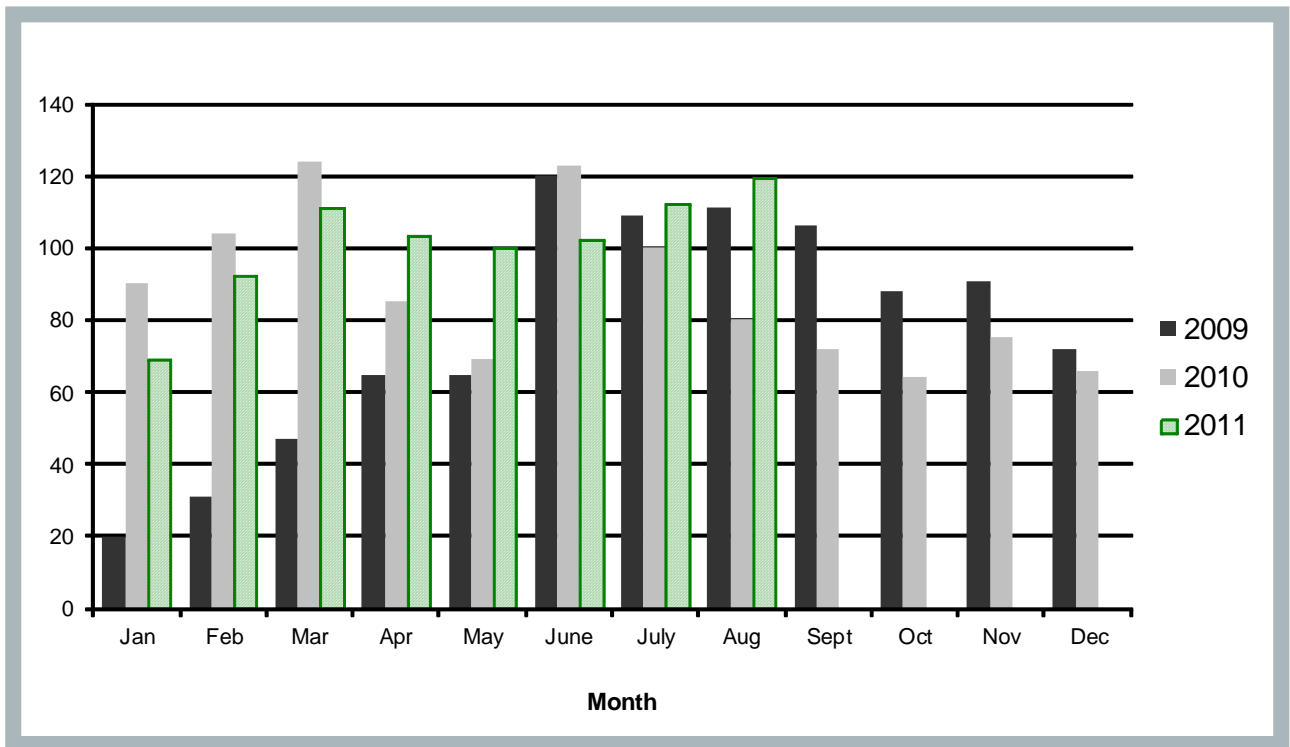
	2007		2008		2009		2010		2011	
	Permits	Valuation	Permits	Valuation	Permits	Valuation	Permits	Valuation	Permits	Valuation
<b>Q1</b>	453	\$70,458,010	310	\$48,298,940	98	\$30,742,752	318	\$95,363,468	272	\$90,446,767
<b>Q2</b>	584	\$89,346,375	345	\$52,733,340	250	\$74,293,319	277	\$88,101,864	305	\$103,812,464
<b>Q3</b>	392	\$60,713,360	213	\$32,173,605	326	\$95,794,828	252	\$81,301,344	231	\$74,763,057
<b>Q4</b>	222	\$35,132,655	118	\$34,234,233	253	\$76,579,581	205	\$63,844,791		
<b>Total</b>	1,651	\$255,650,600	986	\$167,440,118	927	\$277,410,480	1,052	\$328,611,467	808	\$269,022,288

Quarter to Date Year to Date

Note: Permit activity listed by calendar year.

All permits listed are for new building permits alone and do not include additions and alteration permits.

### SINGLE FAMILY PERMITS (2009-2011)



### NON-RESIDENTIAL VALUATION (2009-2011)

