



MCKINNEY AT A GLANCE

Prepared by the McKinney Planning Department

We are on the web!
 www.mckinneytexas.org

POPULATION SUMMARY

McKinney Population (1900 - 2011)					
Year	Population	Year	Population	Year	Population
1900	4,342	2000	54,369	2010	131,117
1910	4,714	2001	58,438**	2011	133,619**
1920	6,677	2002	66,990**	2012	
1930	7,307	2003	76,907**	2013	
1940	8,555	2004	85,865**	2014	
1950	10,560	2005	94,733**	2015	
1960	13,763	2006	104,853**	2016	
1970	15,193	2007	115,198**	2017	
1980	16,256	2008	120,978**	2018	
1990	21,283	2009	122,083**	2019	

Official Census figure unless otherwise noted.

** Estimate as of January of that calendar year

SUMMARY OF DEVELOPMENT

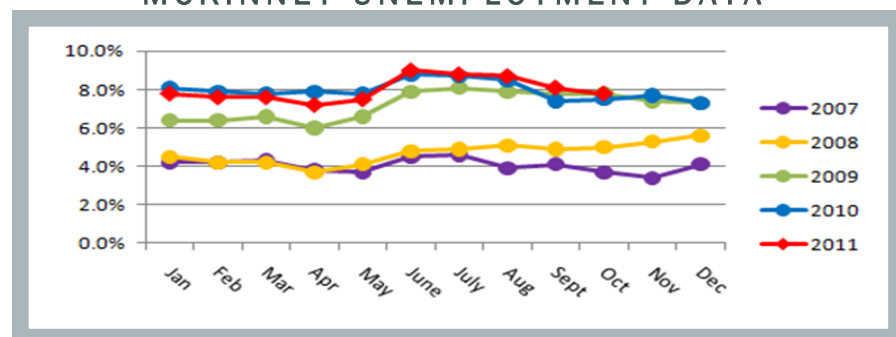
Development Type	Permits Issued	Construction Dollars
Single Family	85	\$27,739,491
Multi Family Units	1@366	\$24,000,000
Non-Residential	3	\$16,320,000
Vertical Mixed Use	0@0	\$0

Note: Non-residential permits include commercial, institutional and recreational permits

NON-RESIDENTIAL AND VERTICAL MIXED USE DEVELOPMENT (SQ. FT.)

Project	Type	Area	Valuation
Encore Wire (Plant 6 Expansion)	Industrial	201,600	\$10,000,000
Imagine International Academy of North Texas	Institutional	59,567	\$6,000,000
Marketing Center @ Adriatica	Office	2,990	\$320,000

MCKINNEY UNEMPLOYMENT DATA



CITY OF MCKINNEY PLANNING DEPARTMENT
 221 N. Tennessee Street
 McKinney, Texas 75069
 Phone: 972.547.7475
 Fax: 972.547.2604
 Hours: 8:00 a.m. to 5:00 p.m.
 Monday through Friday



UNEMPLOYMENT RATES
 Unemployment Rate published by the Texas Workforce Commission for October 2011
 McKinney: 7.8%
 Collin County: 7.2 %
 Texas: 8.4%
 United States: 9.0%

Note: United States and Texas unemployment rates are seasonally adjusted

NON-RESIDENTIAL PERMITS (2007-2011)

	2007		2008		2009		2010		2011	
	Permits	Valuation	Permits	Valuation	Permits	Valuation	Permits	Valuation	Permits	Valuation
Q1	8	\$32,650,000	16	\$46,056,816	15	\$71,507,275	5	\$8,700,000	9	\$5,805,000
Q2	20	\$28,815,945	13	\$10,377,250	11	\$5,086,303	11	\$92,565,200	9	\$13,250,300
Q3	24	\$50,699,275	10	\$88,506,315	13	\$31,600,711	4	\$2,544,000	8	\$18,342,360
Q4	12	\$48,815,000	15	\$67,267,383	4	\$10,200,000	6	\$5,316,520	4	\$16,420,000
Total	64	\$160,980,220	54	\$212,207,764	43	\$118,394,289	26	\$109,125,720	30	\$53,817,660

Quarter to Date Year to Date

VERTICAL MIXED USE PERMITS (2007-2011)

	2007		2008		2009		2010		2011	
	Permits	Valuation	Permits	Valuation	Permits	Valuation	Permits	Valuation	Permits	Valuation
Q1	2@320	\$37,406,175	0@0	\$0	0@0	\$0	0@0	\$0	0@0	\$0
Q2	1@0	\$5,000,000	0@0	\$0	0@0	\$0	0@0	\$0	0@0	\$0
Q3	0@0	\$0	0@0	\$0	0@0	\$0	0@0	\$0	0@0	\$0
Q4	0@0	\$0	0@0	\$0	0@0	\$0	0@0	\$0	0@0	\$0
Total	3@320	\$42,406,175	0@0	\$0	0@0	\$0	0@0	\$0	0@0	\$0

Quarter to Date Year to Date

MULTI-FAMILY UNIT PERMITS (2007-2011)

	2007		2008		2009		2010		2011	
	Permits	Valuation	Permits	Valuation	Permits	Valuation	Permits	Valuation	Permits	Valuation
Q1	1@20	\$2,000,000	0@0	\$0	3@1,008	\$60,385,900	0@0	\$0	0@0	\$0
Q2	1@187	\$4,115,880	2@812	\$48,860,000	0@0	\$0	0@0	\$0	0@0	\$0
Q3	0@0	\$0	0@0	\$0	0@0	\$0	0@0	\$0	0@0	\$0
Q4	1@379	\$20,000,000	0@0	\$0	0@0	\$0	0@0	\$0	1@366	\$24,000,000
Total	3@586	\$26,115,880	2@812	\$48,860,000	3@1,008	\$60,385,900	0@0	\$0	1@366	\$24,000,000

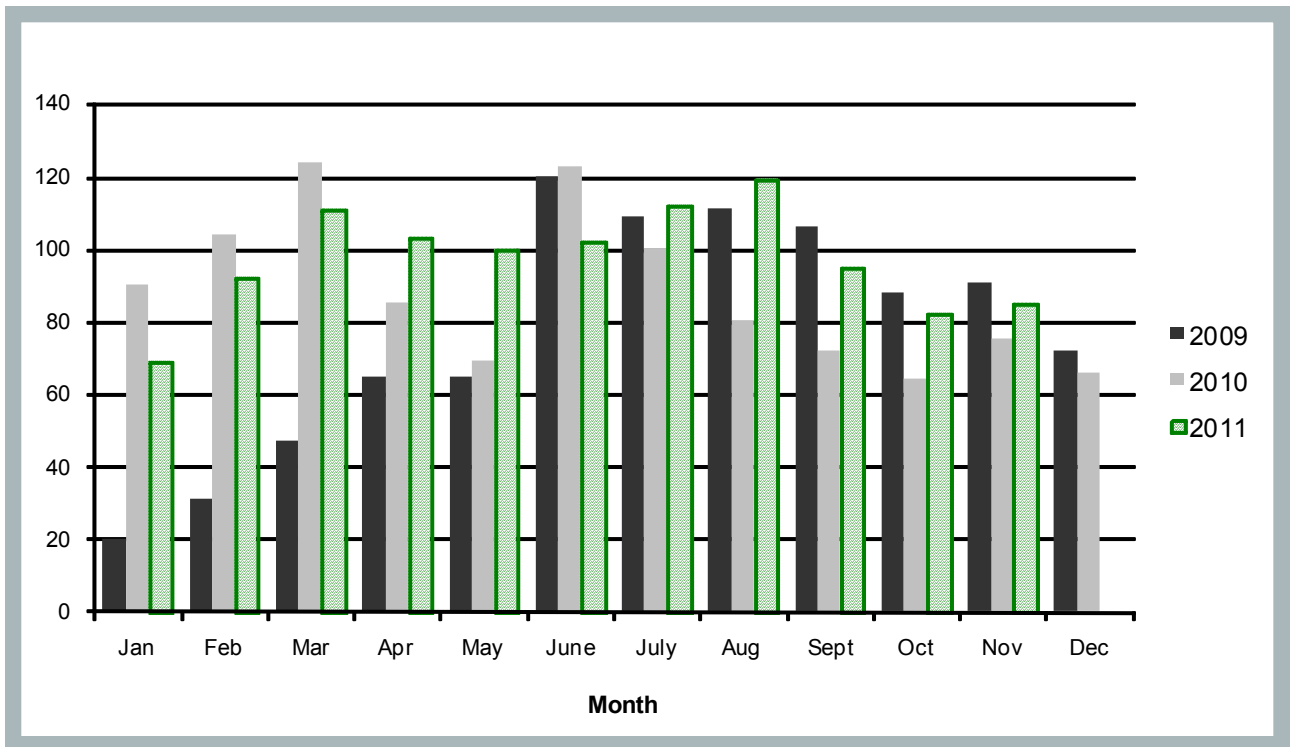
Quarter to Date Year to Date

SINGLE FAMILY PERMITS (2007-2011)

	2007		2008		2009		2010		2011	
	Permits	Valuation	Permits	Valuation	Permits	Valuation	Permits	Valuation	Permits	Valuation
Q1	453	\$70,458,010	310	\$48,298,940	98	\$30,742,752	318	\$95,363,468	272	\$90,446,767
Q2	584	\$89,346,375	345	\$52,733,340	250	\$74,293,319	277	\$88,101,864	305	\$103,812,464
Q3	392	\$60,713,360	213	\$32,173,605	326	\$95,794,828	252	\$81,301,344	326	\$106,568,145
Q4	222	\$35,132,655	118	\$34,234,233	253	\$76,579,581	205	\$63,844,791	167	\$54,909,891
Total	1,651	\$255,650,600	986	\$167,440,118	927	\$277,410,480	1,052	\$328,611,467	1,070	\$355,737,267

Quarter to Date Year to Date

SINGLE FAMILY PERMITS (2009-2011)



NON-RESIDENTIAL VALUATION (2009-2011)

