

MCKINNEY AT A GLANCE

Prepared by the McKinney Planning Department



We are on the web!
 www.mckinneytexas.org

**CITY OF MCKINNEY
 PLANNING DEPARTMENT**
 221 N. Tennessee Street
 McKinney, Texas 75069
 Phone: 972.547.7475
 Fax: 972.547.2604
 Hours: 8:00 a.m. to 5:00 p.m.
 Monday through Friday

POPULATION SUMMARY

McKinney Population (1900 - 2012)					
Year	Population	Year	Population	Year	Population
1900	4,342	2000	54,369	2010	131,117
1910	4,714	2001	58,438**	2011	133,619**
1920	6,677	2002	66,990**	2012	136,666**
1930	7,307	2003	76,907**	2013	
1940	8,555	2004	85,865**	2014	
1950	10,560	2005	94,733**	2015	
1960	13,763	2006	104,853**	2016	
1970	15,193	2007	115,198**	2017	
1980	16,256	2008	120,978**	2018	
1990	21,283	2009	122,083**	2019	

Official Census figure unless otherwise noted.

** Estimate as of January of that calendar year

SUMMARY OF DEVELOPMENT

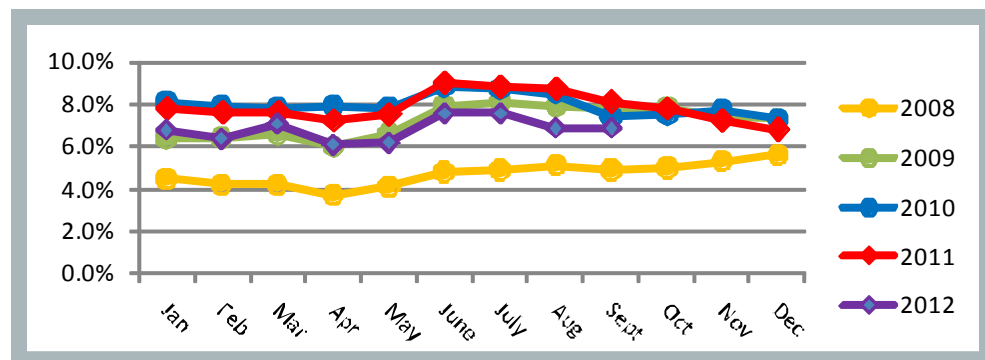
Development Type	Permits Issued	Construction Dollars
Single Family	99	\$34,783,008
Multi Family Units	0@0	\$0
Non-Residential	5	\$13,748,282
Vertical Mixed Use	0@0	\$0

Note: Non-residential permits include commercial, institutional and recreational permits

NON-RESIDENTIAL AND VERTICAL MIXED USE DEVELOPMENT(SQ.Ft.)

Project	Type	Area	Valuation
Firestone Complete Automotive	Retail/Service	8,899	\$550,000
Second Family Dogs	Retail/Service	4,979	\$500,000
Touchstone Medical	Medical	4,558	\$341,850
McKinney Retirement	Retail/Service	117,789	\$10,356,432
Texas Pediatric Dentistry	Medical	6,064	\$2,000,000

MCKINNEY UNEMPLOYMENT DATA



UNEMPLOYMENT RATES

Unemployment Rate published by the Texas Workforce Commission for August 2012

McKinney: 6.9%
 Collin County: 6.3%
 Texas: 7.1%
 United States: 8.1%

Note: United States and Texas unemployment rates are seasonally adjusted

NON-RESIDENTIAL PERMITS (2008-2012)

	2008		2009		2010		2011		2012	
	Permits	Valuation	Permits	Valuation	Permits	Valuation	Permits	Valuation	Permits	Valuation
Q1	16	\$46,056,816	15	\$71,507,275	5	\$8,700,000	9	\$5,805,000	2	\$255,000
Q2	13	\$10,377,250	11	\$5,086,303	11	\$92,565,200	9	\$13,250,300	11	\$90,639,388
Q3	10	\$88,506,315	13	\$31,600,711	4	\$2,544,000	8	\$18,342,360	16	\$38,797,657
Q4	15	\$67,267,383	4	\$10,200,000	6	\$5,316,520	6	\$16,920,000		
Total	54	\$212,207,764	43	\$118,394,289	26	\$109,125,720	32	\$54,317,660	29	\$129,692,045

 Year to Date


VERTICAL MIXED USE PERMITS (2008-2012)

	2008		2009		2010		2011		2012	
	Permits	Valuation	Permits	Valuation	Permits	Valuation	Permits	Valuation	Permits	Valuation
Q1	0@0	\$0	0@0	\$0	0@0	\$0	0@0	\$0	2@26	\$7,000,000
Q2	0@0	\$0	0@0	\$0	0@0	\$0	0@0	\$0	0	0
Q3	0@0	\$0	0@0	\$0	0@0	\$0	0@0	\$0	0	0
Q4	0@0	\$0	0@0	\$0	0@0	\$0	0@0	\$0		
Total	0@0	\$0	0@0	\$0	0@0	\$0	0@0	\$0	2@26	\$7,000,000

 Year to Date


MULTI-FAMILY UNIT PERMITS (2008-2012)

	2008		2009		2010		2011		2012	
	Permits	Valuation	Permits	Valuation	Permits	Valuation	Permits	Valuation	Permits	Valuation
Q1	0@0	\$0	3@1,008	\$60,385,900	0@0	\$0	0@0	\$0	1@334	\$20,000,000
Q2	2@812	\$48,860,000	0@0	\$0	0@0	\$0	0@0	\$0	0	0
Q3	0@0	\$0	0@0	\$0	0@0	\$0	0@0	\$0	0	0
Q4	0@0	\$0	0@0	\$0	0@0	\$0	1@366	\$24,000,000		
Total	2@812	\$48,860,000	3@1,008	\$60,385,900	0@0	\$0	1@366	\$24,000,000	1@334	\$20,000,000

 Year to Date

SINGLE FAMILY PERMITS (2008-2012)

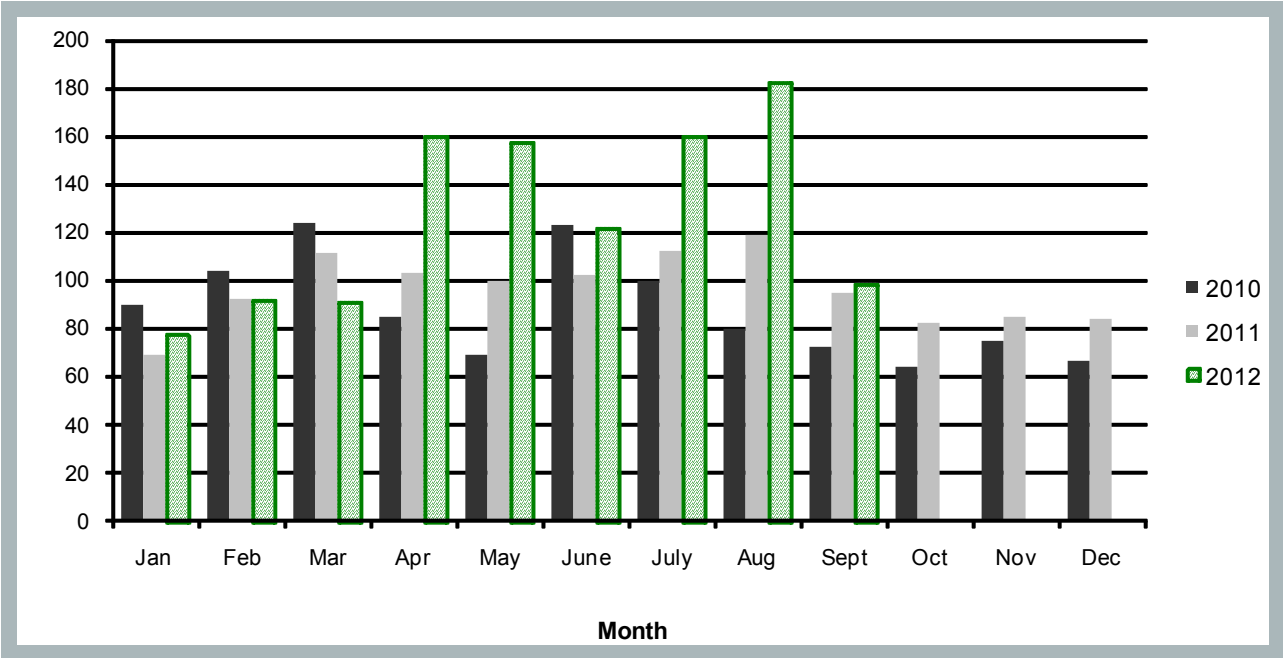
	2008		2009		2010		2011		2012	
	Permits	Valuation	Permits	Valuation	Permits	Valuation	Permits	Valuation	Permits	Valuation
Q1	310	\$48,298,940	98	\$30,742,752	318	\$95,363,468	272	\$90,446,767	261	\$88,437,310
Q2	345	\$52,733,340	250	\$74,293,319	277	\$88,101,864	305	\$103,812,464	440	\$150,586,422
Q3	213	\$32,173,605	326	\$95,794,828	252	\$81,301,344	326	\$106,568,145	442	\$147,018,920
Q4	118	\$34,234,233	253	\$76,579,581	205	\$63,844,791	251	\$83,743,971		
Total	986	\$167,440,118	927	\$277,410,480	1,052	\$328,611,467	1,154	\$384,571,347	1,143	\$386,042,652

 Year to Date

Note: Permit activity listed by calendar year.

All permits listed are for new buildings and major additions but do not include minor additions and alterations.

SINGLE FAMILY PERMITS (2010-2012)



NON-RESIDENTIAL VALUATION (2010-2012)

