



MCKINNEY AT A GLANCE

A Monthly Report prepared by the McKinney Planning Department

We are on the web!
 ○ ○ ○ ○ ○ ○ ○ ○
www.mckinneytexas.org

POPULATION SUMMARY

McKinney Population (1900 - 2012)					
Year	Population	Year	Population	Year	Population
1900	4,342	2000	54,369	2010	131,117
1910	4,714	2001	58,438**	2011	133,619**
1920	6,677	2002	66,990**	2012	136,666**
1930	7,307	2003	76,907**	2013	
1940	8,555	2004	85,865**	2014	
1950	10,560	2005	94,733**	2015	
1960	13,763	2006	104,853**	2016	
1970	15,193	2007	115,198**	2017	
1980	16,256	2008	120,978**	2018	
1990	21,283	2009	122,083**	2019	

Official Census figure unless otherwise noted.

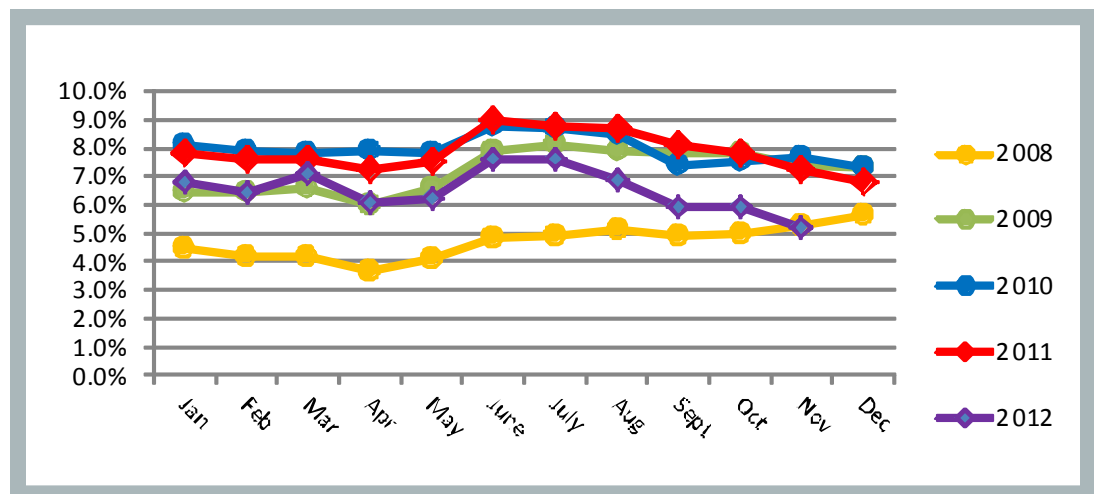
** Estimate as of January of that calendar year

SUMMARY OF DEVELOPMENT

Development Type	Permits Issued	Construction Dollars
Single Family	95	\$33,553,585
Multi Family Units	0@0	\$0
Non-Residential	1	\$1,000,000
Vertical Mixed Use	0@0	\$0

Note: Non-residential permits include commercial, institutional and recreational permits

MCKINNEY UNEMPLOYMENT DATA



UNEMPLOYMENT RATES

Unemployment Rate published by the Texas Workforce Commission for November 2012

- McKinney: 5.2%
- Collin County: 5.2%
- Texas: 6.2%
- United States: 7.7%

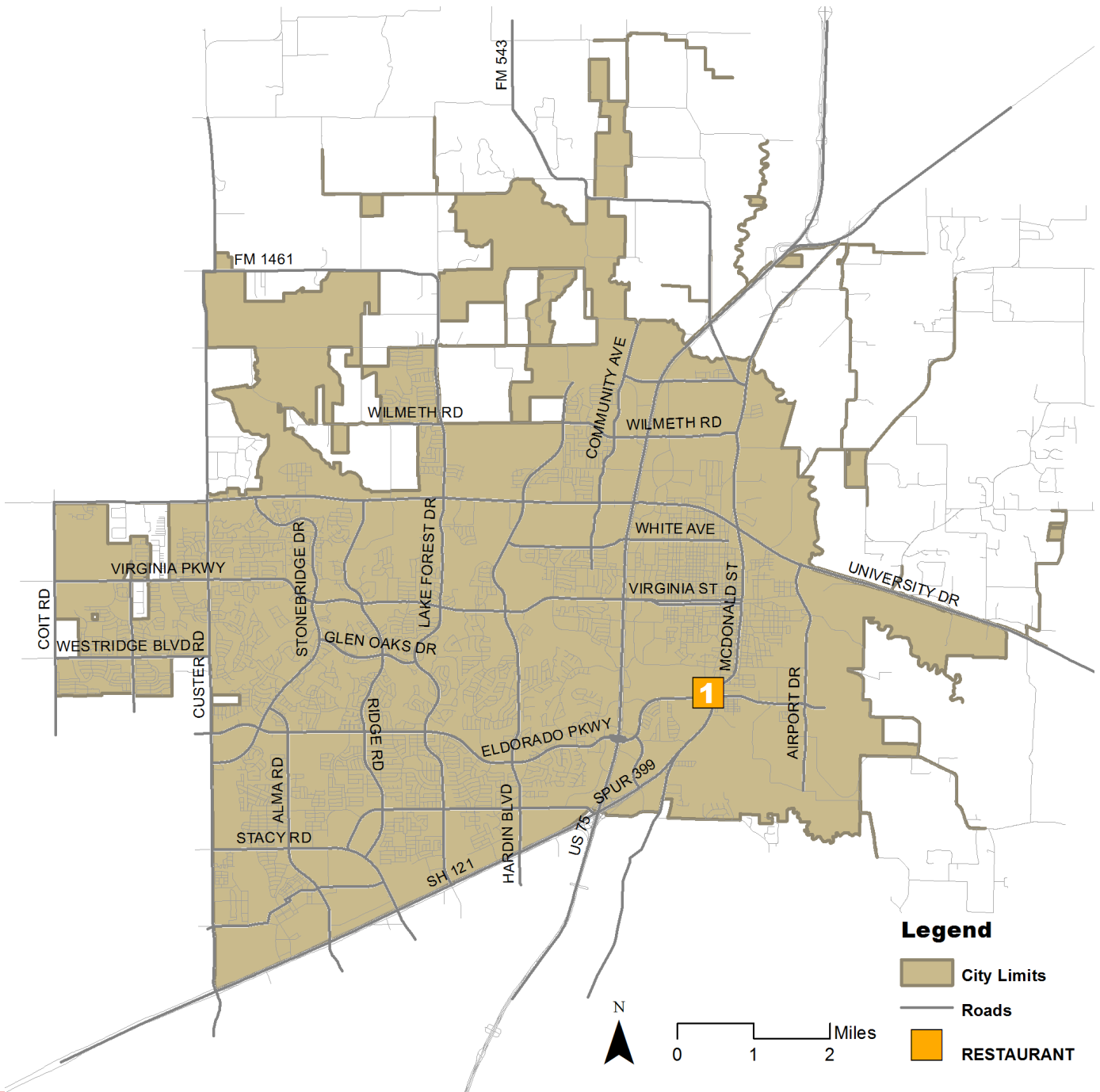
Note: United States and Texas unemployment rates are seasonally adjusted



NON-RESIDENTIAL AND VERTICAL MIXED USE DEVELOPMENT

Project	Address	Type	Area (Sq. Ft.)	Valuation
1. McDonalds Restaurant	240 Eldorado Pkwy.	Restaurant	3,911	\$1,000,000

NON-RESIDENTIAL AND VERTICAL MIXED USE DEVELOPMENT MAP



NON-RESIDENTIAL PERMITS (2008-2012)

	2008		2009		2010		2011		2012	
	Permits	Valuation	Permits	Valuation	Permits	Valuation	Permits	Valuation	Permits	Valuation
Q1	16	\$46,056,816	15	\$71,507,275	5	\$8,700,000	9	\$5,805,000	2	\$255,000
Q2	13	\$10,377,250	11	\$5,086,303	11	\$92,565,200	9	\$13,250,300	11	\$90,639,388
Q3	10	\$88,506,315	13	\$31,600,711	4	\$2,544,000	8	\$18,342,360	16	\$38,797,657
Q4	15	\$67,267,383	4	\$10,200,000	6	\$5,316,520	6	\$16,920,000	10	\$24,771,750
Total	54	\$212,207,764	43	\$118,394,289	26	\$109,125,720	32	\$54,317,660	39	\$154,463,795

VERTICAL MIXED USE PERMITS (2008-2012)

	2008		2009		2010		2011		2012	
	Permits	Valuation	Permits	Valuation	Permits	Valuation	Permits	Valuation	Permits	Valuation
Q1	0@0	\$0	0@0	\$0	0@0	\$0	0@0	\$0	2@26	\$7,000,000
Q2	0@0	\$0	0@0	\$0	0@0	\$0	0@0	\$0	0	0
Q3	0@0	\$0	0@0	\$0	0@0	\$0	0@0	\$0	0	0
Q4	0@0	\$0	0@0	\$0	0@0	\$0	0@0	\$0	0	0
Total	0@0	\$0	0@0	\$0	0@0	\$0	0@0	\$0	2@26	\$7,000,000

MULTI-FAMILY UNIT PERMITS (2008-2012)

	2008		2009		2010		2011		2012	
	Permits	Valuation	Permits	Valuation	Permits	Valuation	Permits	Valuation	Permits	Valuation
Q1	0@0	\$0	3@1,008	\$60,385,900	0@0	\$0	0@0	\$0	1@334	\$20,000,000
Q2	2@812	\$48,860,000	0@0	\$0	0@0	\$0	0@0	\$0	0	0
Q3	0@0	\$0	0@0	\$0	0@0	\$0	0@0	\$0	0	0
Q4	0@0	\$0	0@0	\$0	0@0	\$0	1@366	\$24,000,000	1@334	\$26,877,763
Total	2@812	\$48,860,000	3@1,008	\$60,385,900	0@0	\$0	1@366	\$24,000,000	2@668	\$46,877,763

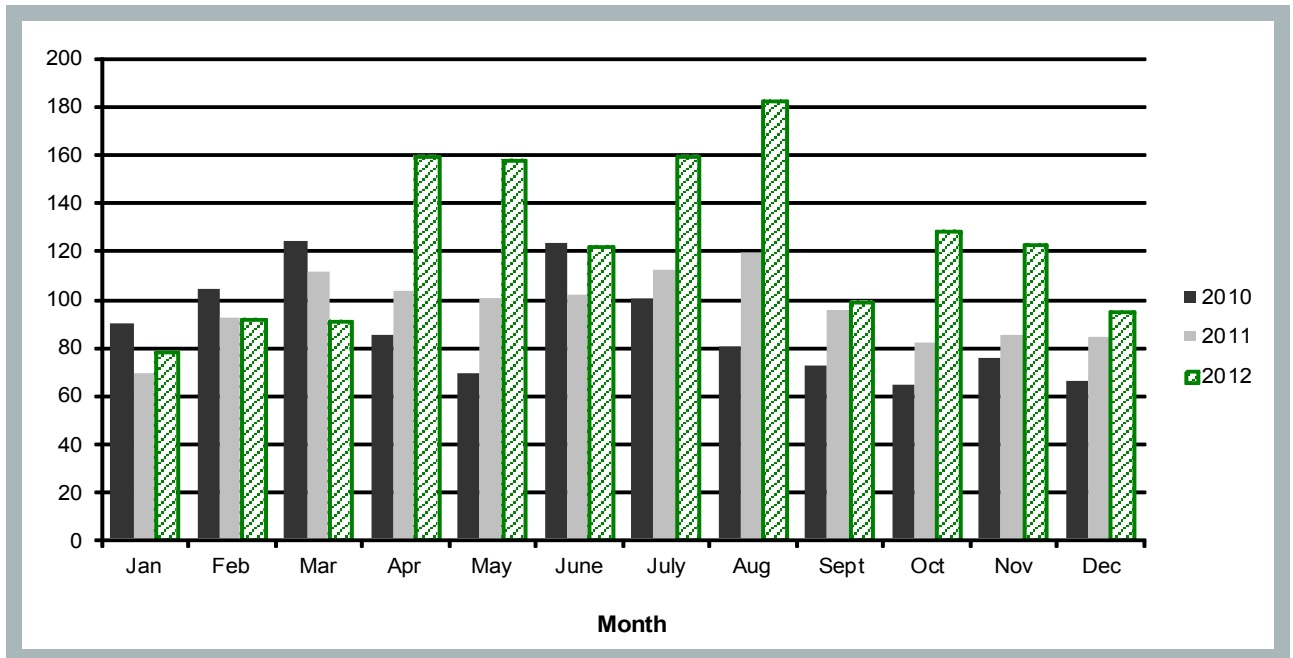
SINGLE FAMILY PERMITS (2008-2012)

	2008		2009		2010		2011		2012	
	Permits	Valuation	Permits	Valuation	Permits	Valuation	Permits	Valuation	Permits	Valuation
Q1	310	\$48,298,940	98	\$30,742,752	318	\$95,363,468	272	\$90,446,767	261	\$88,437,310
Q2	345	\$52,733,340	250	\$74,293,319	277	\$88,101,864	305	\$103,812,464	440	\$150,586,422
Q3	213	\$32,173,605	326	\$95,794,828	252	\$81,301,344	326	\$106,568,145	442	\$147,018,920
Q4	118	\$34,234,233	253	\$76,579,581	205	\$63,844,791	251	\$83,743,971	347	\$117,917,809
Total	986	\$167,440,118	927	\$277,410,480	1,052	\$328,611,467	1,154	\$384,571,347	1,490	\$503,960,461

Note: Permit activity listed by calendar year.

All permits listed are for new buildings and major additions but do not include minor additions and alterations.

SINGLE FAMILY PERMITS (2010-2012)



NON-RESIDENTIAL VALUATION (2010-2012)

